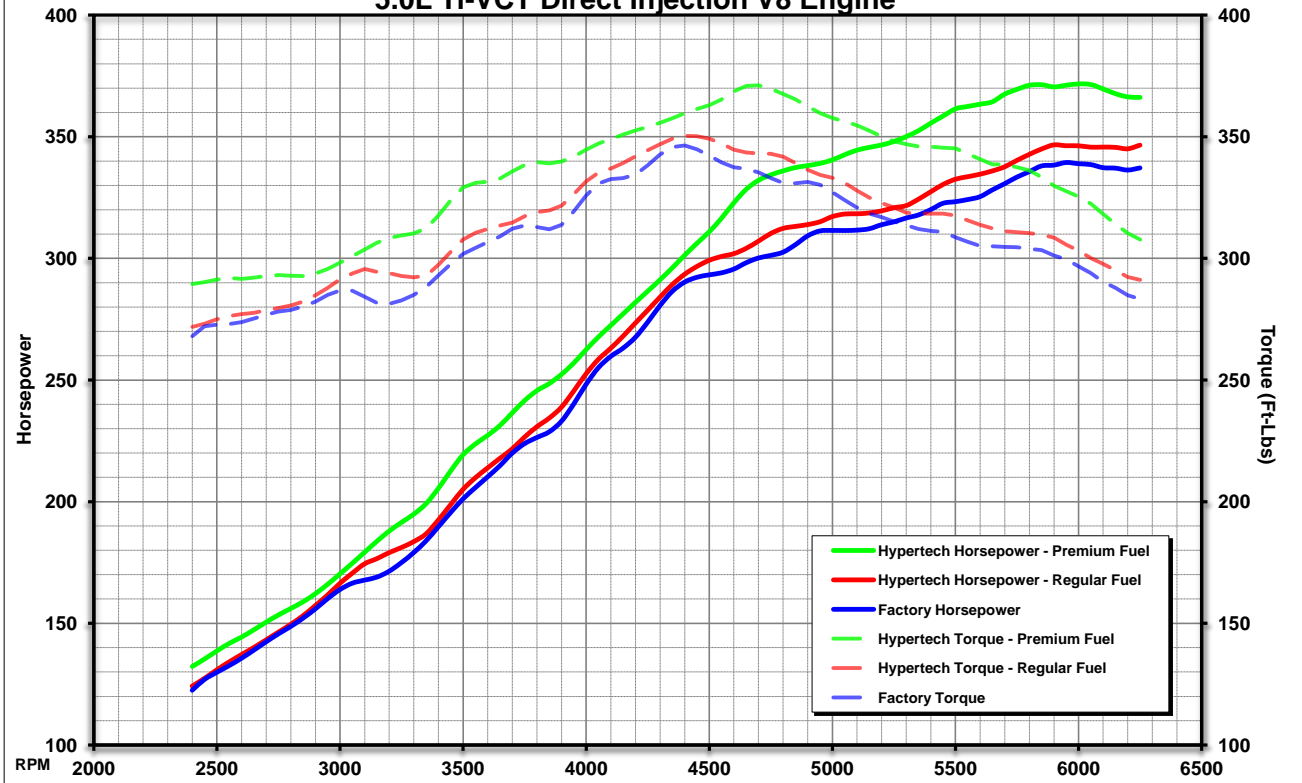


HYPERTECH DYNAMOMETER TEST RESULTS

2018 Ford F-150
5.0L Ti-VCT Direct Injection V8 Engine



Tuning	Horsepower		Torque	
	Maximum	Gain	Maximum	Gain
Hypertech Tuning 93 Octane Fuel	372 HP @ 6000 RPM	+38 HP @ 5500 RPM	371 Ft-Lbs @ 4700 RPM	+37 Ft-Lbs @ 4750 RPM
Hypertech Tuning 91 Octane Fuel	371 HP @ 6050 RPM	+36 HP @ 5600 RPM	367 Ft-Lbs @ 4650 RPM	+33 Ft-Lbs @ 5550 RPM
Hypertech Tuning 89 Octane Fuel	363 HP @ 5900 RPM	+26 HP @ 5600 RPM	359 Ft-Lbs @ 4600 RPM	+24 Ft-Lbs @ 5600 RPM
Hypertech Tuning 87 Octane Fuel	347 HP @ 5900 RPM	+10 HP @ 5500 RPM	350 Ft-Lbs @ 4400 RPM	+13 Ft-Lbs @ 3200 RPM
Factory Stock Tuning	339 HP @ 6000 RPM	—	346 Ft-Lbs @ 4400 RPM	—

RPM	Horsepower		
	Factory HP	Hypertech 87 Octane Fuel HP (Gain)	Hypertech 93 Octane Fuel HP (Gain)
2400	122	124 (+2)	132 (+10)
2500	130	131 (+1)	139 (+9)
3000	164	166 (+2)	170 (+6)
3200	171	179 (+8)	188 (+17)
3500	201	205 (+4)	219 (+18)
4000	248	253 (+5)	263 (+15)
4400	290	293 (+3)	301 (+11)
4500	293	299 (+6)	311 (+18)
4700	300	307 (+7)	332 (+32)
4750	301	310 (+9)	334 (+33)
5000	311	317 (+6)	340 (+29)
5500	323	333 (+10)	361 (+38)
5900	338	347 (+9)	370 (+32)
6000	339	346 (+7)	372 (+33)
6250	337	347 (+10)	366 (+29)

RPM	Torque		
	Factory Torque	Hypertech 87 Octane Fuel Torque (Gain)	Hypertech 93 Octane Fuel Torque (Gain)
2400	268	272 (+4)	289 (+21)
2500	273	275 (+2)	291 (+18)
3000	287	291 (+4)	298 (+11)
3200	281	294 (+13)	308 (+27)
3500	302	308 (+6)	329 (+27)
4000	326	332 (+6)	345 (+19)
4400	346	350 (+4)	360 (+14)
4500	342	349 (+7)	363 (+21)
4700	335	343 (+8)	371 (+36)
4750	333	343 (+10)	370 (+37)
5000	327	333 (+6)	358 (+31)
5500	309	318 (+9)	345 (+36)
5900	301	309 (+8)	330 (+29)
6000	297	303 (+6)	325 (+28)
6250	283	291 (+8)	308 (+25)

Red Shaded Area Denotes Power Measured Above Factory REV Limiter of 6350 RPM

12 Fully Customizable Tuning Features

- **ENGINE TUNING:** 4 Optimized Tunes for 87, 89, 91, & 93+ Octane Fuels
- **TIRE SIZE:** Correct Speedometer & Odometer for 24"-54" Tires
- **SHIFT POINTS:** Raise or Lower Full Throttle Shift Points Per Gear
- **SHIFT FIRMNESS TUNES:** Stock, Tow, Street, Sport, & Performance
- **SHIFT RESPONSE TUNES:** Hyper-Mileage, Mileage, Stock, Tow, Street, Sport, Performance
- **THROTTLE RESPONSE:** Normal/Sport Mode: Hyper-Mileage, Mileage, Tow, Street, Sport, Performance
- **DTC'S:** Read, Display Codes With Full Definition, and Clear Codes
- **IPMS:** Quick Command Adjustable Warning Pressure for 20-115psi
- **REV LIMIT:** Raise or Lower up to +300/500RPM
- **TOP SPEED LIMITER:** Lower, or Raise to Match Speed Rate Tires
- **FANS:** Adjust On/Off Temperatures
- **AUTO START/STOP:** Enable/Disable



3215 Appling Rd., Bartlett, TN 38133 www.Hypertech.com
(901) 385-1888 © Hypertech, Inc. 2018

Vehicle Tested: 2018 Ford F-150
Engine: 5.0L Ti-VCT DI
Transmission: 10R80 (4th Gear)
Gear Ratio: 3.15:1
Tire Size: 275/55R20 A/S
Test Date: 4/12/2018

